



MONTHLY MEMBERSHIP PROGRESS REPORT

District 325B2

Results as of: 1/31/2017

GMT: NAZMUL HAQUE

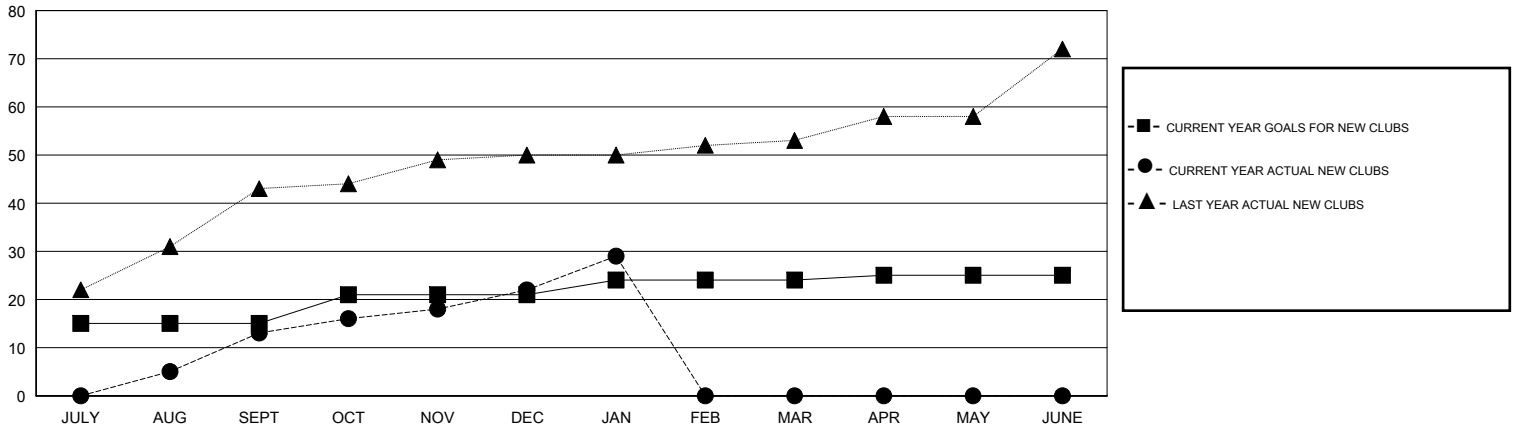
LOCATION NEPAL

GMT CA

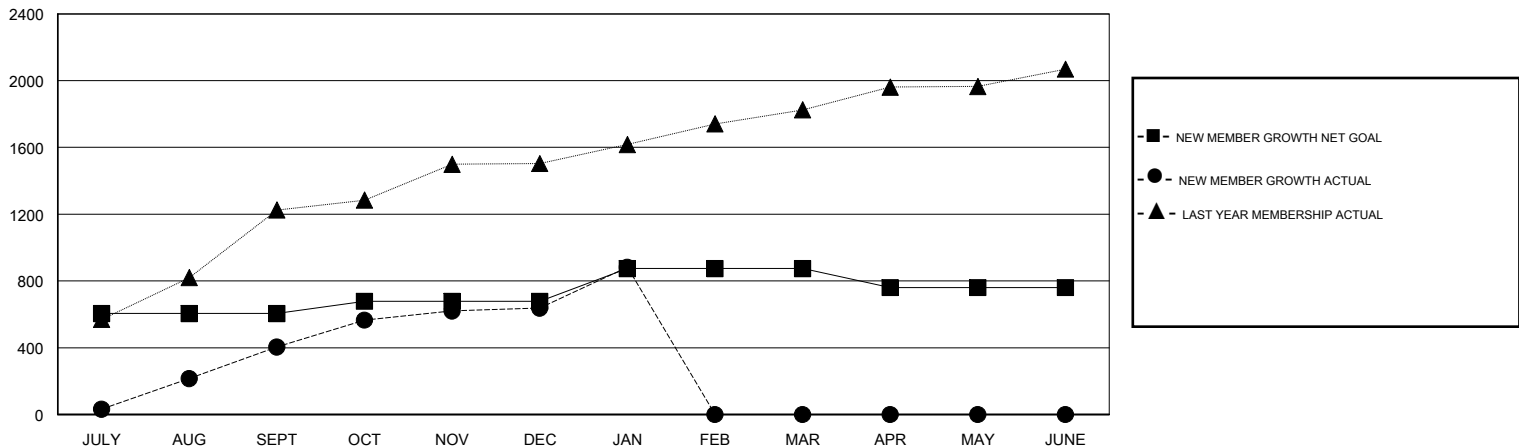
| Clubs | | | |
|-----------------------|---------------|-----------|---------------|
| RESULTS FOR 2016-2017 | | | |
| QUARTER | NEW CLUB GOAL | NEW CLUBS | DROPPED CLUBS |
| JULY/AUG/SEPT | 15 | 13 | 1 |
| OCT/NOV/DEC | 6 | 9 | 2 |
| JAN/FEB/MAR | 3 | 7 | 2 |
| APR/MAY/JUNE | 1 | 0 | 0 |

| Members | | | |
|-----------------------|--|--|--|
| RESULTS FOR 2016-2017 | | | |
| QUARTER | NEW MEMBER GROWTH NET GOAL (not reinstated or transfers) | NEW MEMBER GROWTH ACTUAL (not reinstated or transfers) | DROPPED MEMBERS ACTUAL (including transfers) |
| JULY/AUG/SEPT | 605 | 607 | 203 |
| OCT/NOV/DEC | 73 | 517 | 284 |
| JAN/FEB/MAR | 196 | 356 | 111 |
| APR/MAY/JUNE | -114 | 0 | 0 |

GOALS AND ACTUAL NEW CLUBS CUMULATIVE



GOALS AND ACTUAL MEMBERS CUMULATIVE



| | | |
|------------------------|---|---------------------------------------|
| DROPPED CLUBS: 5 | 184 CLUBS OF 300 ADDED 1 OR MORE NEW MEMBERS | GENDER DISTRIBUTION |
| | | MALE 6,397 (80.87%) |
| | | FEMALE 1,513 (19.13%) |
| DROPPED MEMBERS | CLICK HERE FOR CUMULATIVE MEMBERSHIP DATA | TOTAL FAMILY UNIT MEMBERS 4,228 |
| DECEASED 6 | | FAMILY MEMBERS PAYING HALF DUES 2,579 |
| CLUB CANCELLED 61 | | |
| OTHER 531 | | |
| TOTAL 598 | | |